

**2025
ANNUAL REPORT**



KENTUCKY PUBLIC HEALTH ASSOCIATION ANNUAL REPORT 2025



Prepared by the KPHA
Communications Committee

**"To promote healthy communities
through advocacy, education, and
leadership."**

A MESSAGE FROM THE PRESIDENT



Dear Members and Partners of the Kentucky Public Health Association,

We are pleased to present you our Kentucky Public Health Association Annual Report. I encourage you to read this report in full and reflect on the opportunities we met this past year and those which remain available to us now.

Much good work has been done, yet challenges remain before us. Frankly, we continue to struggle with the many of the same challenges we have faced for decades. And, for many people, the world today may feel like a Great Machine, throwing off bolts, making concerning noises, and seemingly in danger of blowing apart. And simply believing it is so can be enough to keep us feeling hopeless and defeated.

But the world is just fine. It has endured (we think) for around 4.5 billion years. It ain't going anywhere. Neither are we--human beings are resilient. History books are filled with accounts of "end of the world"-level events. Many of these events were truly horrific. Yet, we survived. Over time, we recovered. And later flourished. We kept moving.

Let's keep moving now.

The Kentucky Public Health Association was created in 1949 as an independent association of volunteers, dedicated to improving the health status of our fellow Kentuckians. There is more work to be done, no? Let's focus not on the obstacles, but rather on the opportunities that lie before us. I like to say, "life is about two things: learning and helping". Learning and helping both require good work—from us. We are creating next year's annual report now, and its pages will tell the stories you help create. May we tell an epic tale—together!

In Service,

Laura Foley, CAP
President, Kentucky Public Health Association

PUBLIC HEALTH IN ACTION

Emergency Preparedness and Response Laurel County Tornado Response

Since 2020, Kentucky has had 13 FEMA-declared disasters from extreme weather. Flooding, Tornadoes and Winter Storm events have plagued the state in recent years, most recently, the February 2025 flooding and May 2025 tornado. Local and state public health agencies are actively involved in the response efforts for these events.

The Kentucky Department for Public Health (KDPH) serves as the lead agency for Emergency Support Function (ESF) 8, which provides coordination of public health and medical-related preparedness. The goal of public health preparedness is to protect the health and safety of the community through coordination of public health and medical services, response, and recovery activities for emergencies, disasters, or planned events.

For Laurel County Health Department, the response following the extreme weather included shelter surveillance by communicable disease staff, vaccination services (tetanus boosters for individuals working to clean debris), environmental service monitoring of emergency food service vendors, information collection and sharing, PPE distribution for debris cleanup, and vital statistics document replacement. Each disaster brings its own unique set of challenges for communities, and state and local public health continuously adapt to most effectively respond to these challenges to meet the needs of the communities they serve.



LCHD partnered with Fast Pace Urgent Care to provide a first aid station and tetanus vaccines at the City Command Post at London-Corbin Airport.



LCHD's Environmental Staff worked to monitor food vendors providing emergency feeding sites throughout the community.



LCHD provided personal protective equipment to local groups working in debris clean-up. Kits included: safety glasses, work gloves, cloth masks, and safety information with local resources.

PUBLIC HEALTH IN ACTION

Emergency Preparedness and Response Franklin County April 2025 Response

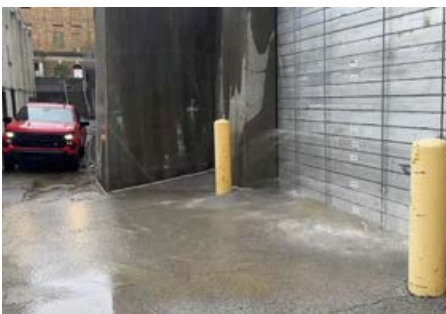
In April 2025, Franklin County, faced a devastating natural disaster as floodwaters from the Kentucky River surged to over 48 feet—just shy of historic levels not seen in decades. The scale of the flooding overwhelmed communities, displaced families, and posed serious public health threats. The Franklin County Health Department played a critical role in the emergency response, participating in and assisting with the Frankfort/Franklin County Emergency Operations Center (EOC) and committing 14 consecutive days of around-the-clock coordination and care.

In collaboration with the local transportation authority, officials arranged for free bus transportation to health clinics for individuals needing follow-up vaccines or additional care. This partnership reduced critical access barriers and supported equity in the response effort.



Mobile vaccine clinics hosted by Franklin County Health Department.

As part of this emergency activation, public health professionals quickly deployed to key locations, prioritizing rapid vaccination efforts and community outreach. Recognizing the immediate risk of waterborne injury and potential for tetanus exposure, mobile vaccination units were established across the city. These mobile units were strategically stationed near flood-impacted zones, at shelters, and temporary housing stations in a local hotel where dozens of displaced families had been relocated, making it easier for affected individuals to access care. Tetanus vaccines were administered onsite at no cost, ensuring timely protection for vulnerable residents.



Franklin County Health Department staff operationalized efforts to recover emergency preparedness items stored within behind the flood wall.

Even after the waters receded, the impact of the flood remained. Public health teams extended their efforts by assisting at the city's "One-Stop Shop," a centralized hub offering services to those affected by the disaster. There, staff provided support with medical administrative needs, including reissuing lost WIC cards, accessing vouchers, and helping residents navigate healthcare benefits disrupted by displacement.

2025-2026 KPHA BOARD OF DIRECTORS

Executive Committee



Laura Foley, CAP
President



**Dr. Stephanie Lokits, DNP,
APRN, FNP-BC**
President-Elect



Dr. Danielle King, LP.D, MPH
Immediate Past President



Lisa Pollock, BSA, BBA
Treasurer



Jessica Austin, MPH
Secretary



Emily Childers
Executive Director

Executive committee members are elected by organization membership and serve varying terms of office. The executive committee is responsible for ensuring that all organization business is conducted in compliance to the Bylaws and Articles of Corporation, as well as required activities as sanctioned by the American Public Health Association. The executive committee works to uphold the ideals of the organization and continue providing opportunities for membership through advocacy, education, and leadership.

2025-2026 KPHA BOARD OF DIRECTORS

Directors at Large



Kristy Bolen, MPA⁺



Tyler Caldwell, MPH



**Dr. Chad Eldridge,
DNP, RN, CIC⁺**



James House, MEP



Meagan Hurst, MPH⁺



**Blake Johnson,
MPH, MSW⁺**



**Dr. Laurie Larkin,
PhD**



**Elizabeth Tennison,
MPH**



Paul Royce, B.Acc



**Dr. Jonathan Vorbeck,
EdD, MPH, CPH**



**Andy Waters,
RS, MPH**



**Dr. Nathaniel Wilson,
PhD, MPH, REHS⁺**

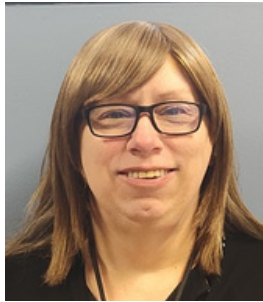
Directors at Large are elected by membership of the Kentucky Public Health and are responsible for the oversight of all official business of the association. Directors at Large serve a term of four (4) years and must participate on at least one KPHA committee. Directors at large represent the voice of KPHA membership on the Board of Directors and serve the organization by engaging the mission, vision, and values of the Kentucky Public Health Association.

(+) indicates Directors at Large who were elected in 2025.

2025-2026 COMMITTEE CHAIRS



Jenika Andrew
Laura Foley, CAP
Advocacy Committee



Brandi Gilley, MPH,
RDN, LD
Communications
Committee



Dr. Danielle King,
LP.D, MPH
Elections Committee



Meagan Hurst,
MPH
Governance
Committee



Lisa Pollock,
BSA, BBA
Finance
Committee*



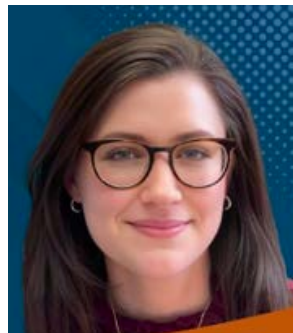
Brittany Parker, MPH
Conference Committee
Finance Committee*



Jennifer Gulley, MPH
Sara Robeson, MPH
Scholarships and Awards
Committee



Dr. Laurel Schwartz, PhD
Madison Yerges, MPH, MHA
Student Engagement
Committee



James House, MEP
Dr. Jonathan Vorbeck, Ed MPH
Workforce Development
Committee



Committee Chairs shall serve on the Board of Directors and report on the activities of the committee at each meeting of the Board and at the Annual Meeting, in person or by written report. Committee Chairs are appointed by the President and serve a term that shall coincide with the term of the appointing President.

(*) - indicates a special committee

Committee Members

We would like to thank the following individuals for their contribution to organizational growth through their service on KPHA committees. Committee membership is voluntary and open to all KPHA members. For more information on how to join a KPHA Committee, visit www.kpha-ky.org.

Advocacy	Awards	Communications	Conference
Tara Gross Joshua Horton Meagan Hurst Blake Johnson Dr. Danielle King Dr. Stephanie Lokits Dr. Julie McKee Jessie Parker Lisa Pollock Andrea Renfrow Jennifer Robinson Elizabeth Tennison	Carissa Adams Jessica Austin Kristy Bolen Carrie Conia Dr. Kelly Giesbrecht Meagan Hurst Karen Lencki Lisa Pollock Paul Royce	Tyler Caldwell Kyra Dailey Dr. Danielle King Joshua Horton Meagan Hurst Brandon Link Brittany Parker Lisa Pollock Elizabeth Tennison Emily Thompson Kim Yazell	Tracy Aaron Carissa Adams Brittany Bell Abigail Belt Kristy Bolen Janie Cambron Carrie Conia Brandi Gilley Jennifer Gulley Meagan Hurst Dr. Laurie Larkin Lisa Pollock Sara Robeson April Thomas Madison Yerges
Finance	Governance	Student Engagement	Workforce Development
Ron Cimala Joshua Horton Meagan Hurst Paul Royce Andrew Waters	Laura Foley Joshua Horton Dr. Danielle King Dr. Stephanie Lokits Lisa Pollock Paul Royce	Nicole Barber Lindsey Brewer Janie Cambron Xiuhua Ding Elizabeth Gordan Meagan Hurst Grace Lartey Lisa Pollock Sara Robeson Dr. Tammi Thomas	Denise Beech Deena Bell Dr. Deniece Bell Dr. Lyndsey Blair Janie Cambron Ashley Carroll Savanna Clark Carrie Conia Mariah Ervin Rudrani Ghosh Brandi Gilley Tara Gross Jennifer Gulley Kendra Helm Carol Huckelby Meagan Hurst Tom Kollmer Karen Lencki Dr. Molly McKinney Bj Newbury Brittany Parker Lisa Pollock Marcy Rein Andrea Renfrow Jennifer Robinson Dr. Laurel Schwartz Dr. Madeline Tomlinson Sharon Trivette

LEARN ABOUT KPHA COMMITTEES

ADVOCACY COMMITTEE

The Advocacy Committee shall recommend policy and advocacy priorities to the Board of Directors, and work to advance the priorities selected by the Board of Directors. The President shall appoint the Chair(s) and other members of the Advocacy Committee, subject to confirmation by the Board of Directors. The Immediate Past President and President-Elect may serve as members of the Advocacy Committee.

Laura Foley and Jenika Andrew serve as chairpersons of the Advocacy Committee.

COMMUNICATIONS COMMITTEE

The Communications Committee shall be responsible for managing internal and external communication of the Association, including social media campaigns to promote public health, establishing a branding policy for the Association, and compiling the mid-year and an annual report of Association activities. The President shall appoint the Chair(s) and other members of the Communications Committee, subject to confirmation by the Board of Directors

Brandi Gilley serves as chairperson of the Communications Committee.

ELECTIONS COMMITTEE

The Elections Committee shall consist of five (5) members of the Association whose duties shall be to identify persons qualified for and interested in serving as officers of the Association. The President shall appoint the Chair(s) and other members of the Elections Committee, subject to confirmation by the Board of Directors.

Dr. Danielle King serves as chairperson of the elections committee.

AWARDS AND SCHOLARSHIP COMMITTEE

The Awards and Scholarship Committee shall be responsible for soliciting nominations for the annual awards of the Association, shall review the nominations and determine the awardee. The awards shall be presented at the annual conference. The Awards and Scholarship Committee shall be responsible for advertising available scholarship opportunities, accept applications for scholarships, and award scholarships based on available funding. The President shall appoint the Chair(s) and other members of the Awards and Scholarship Committee, subject to confirmation by the Board of Directors.

Jennifer Gulley and Sara Robeson serve as chairpersons of the Awards and Scholarship Committee.

CONFERENCE COMMITTEE

The Conference Committee shall plan, promote, and execute the conferences and annual meeting of the Association. The President shall appoint the Chair(s) and other members of the Conference Committee, subject to confirmation by the Board of Directors.

Brittany Parker serves as chairperson of the conference committee.



LEARN ABOUT OUR COMMITTEES

FINANCE COMMITTEE*

The Finance Committee shall be responsible for developing the annual operating budget of the Association, tracking all revenues and expenditures of the Association, identifying additional streams of revenue for the Association, and reviewing the membership fee structure. The Treasurer shall serve as the Chair of this committee. The President shall appoint the other members of the Finance Committee, subject to confirmation by the Board of Directors.

Lisa Pollock and Brittany Parker serve as chairpersons of the Finance Committee.

WORKFORCE DEVELOPMENT COMMITTEE

The Workforce Development Committee shall be responsible for increasing workforce development opportunities for public health professionals statewide, including identifying and developing opportunities for the Association to host and sponsor trainings. The President shall appoint the Chair(s) and other members of the Workforce Development Committee, subject to confirmation by the Board of Directors.

James House and Dr. Jonathan Vorbeck serve as chairpersons of the Workforce Development Committee.

GOVERNANCE COMMITTEE

The Governance Committee shall make recommendations to the Board of Directors with amendments to the bylaws, modifications to the policies and procedures of the Association, onboarding new officers and board members, and modifying the strategic plan. The President shall appoint the Chair(s) and other members of the Governance Committee, subject to confirmation by the Board of Directors.

Meagan Hurst serves as the chairperson of the Governance Committee.

STUDENT ENGAGEMENT COMMITTEE

The Student Engagement Committee shall be responsible for promoting the interest and involvement of higher education students in Kentucky with a concern for public health. The President shall appoint the Chair(s) and other members of the Student Engagement Committee, subject to confirmation by the Board of Directors.

Dr. Laurel Schwartz and Madison Yerges serve as chairpersons of the Student Engagement Committee



(*) - indicates a special committee

WORKFORCE DEVELOPMENT

The KPHA Workforce Development (WFD) Committee partnered with the Kentucky Department for Public Health's (KDPH) Center for Foundational Health (C4FH) to sponsor the WFD Exhibitor Booth at the 2025 Annual Conference in Louisville, KY from March 26-28, 2025. The goal was to showcase local, state, and federal partnerships enhancing public health career opportunities and highlight the collaborative efforts in recruiting, hiring, training, retaining, and sustaining a competent and diverse response-ready public health workforce for Kentucky. During the conference, participants had the opportunity to meet with representatives from KDPH, KPHA, and Eastern Kentucky University (EKU) to learn more about the WFD partnerships, public health career opportunities, where to find public health jobs, available internships, upcoming leadership training and other WFD initiatives happening throughout Kentucky.

A packed audience gathered on Wednesday, March 26, 2025, for the KPHA's WFD Committee's panel session titled, "Roots of Success: Nourishing the Seeds of Kentucky's Public Health Workforce". Attendees joined this session to hear insights from a panel about WFD initiatives from local, state, and governmental public health agencies and academia. The panel session was facilitated by KPHA's WFD Committee Co-Chairs, Dr. Jon Vorbeck, Assistant Professor at EKU, and Jim House, Workforce Director for the Public Health Infrastructure Grant at KDPH.

The first to present during the session was Billy Pitts, Training Committee Chair, Kentucky Health Departments Association (KHDA), who highlighted local efforts to strengthen public health infrastructure through shared services projects and workforce readiness initiatives. Deena Bell, Human Services Program Supervisor, KDPH, introduced the C4FH, providing information about the public health career pathway programs established to strengthen recruitment, retention, and training efforts. Tom Kollmer, Education and Workforce Development Branch Manager, KDPH, presented findings from KDPH's Core Competency Assessment, shedding light on current workforce needs and future planning efforts.



KPHA EKU student members working the KPHA WFD booth. Pictured left to right: Erin Baiamonte, Maddie Bowen



Presenters and Audience at the session, "Roots of Success: Nourishing the Seeds of Kentucky's Public Health Workforce".

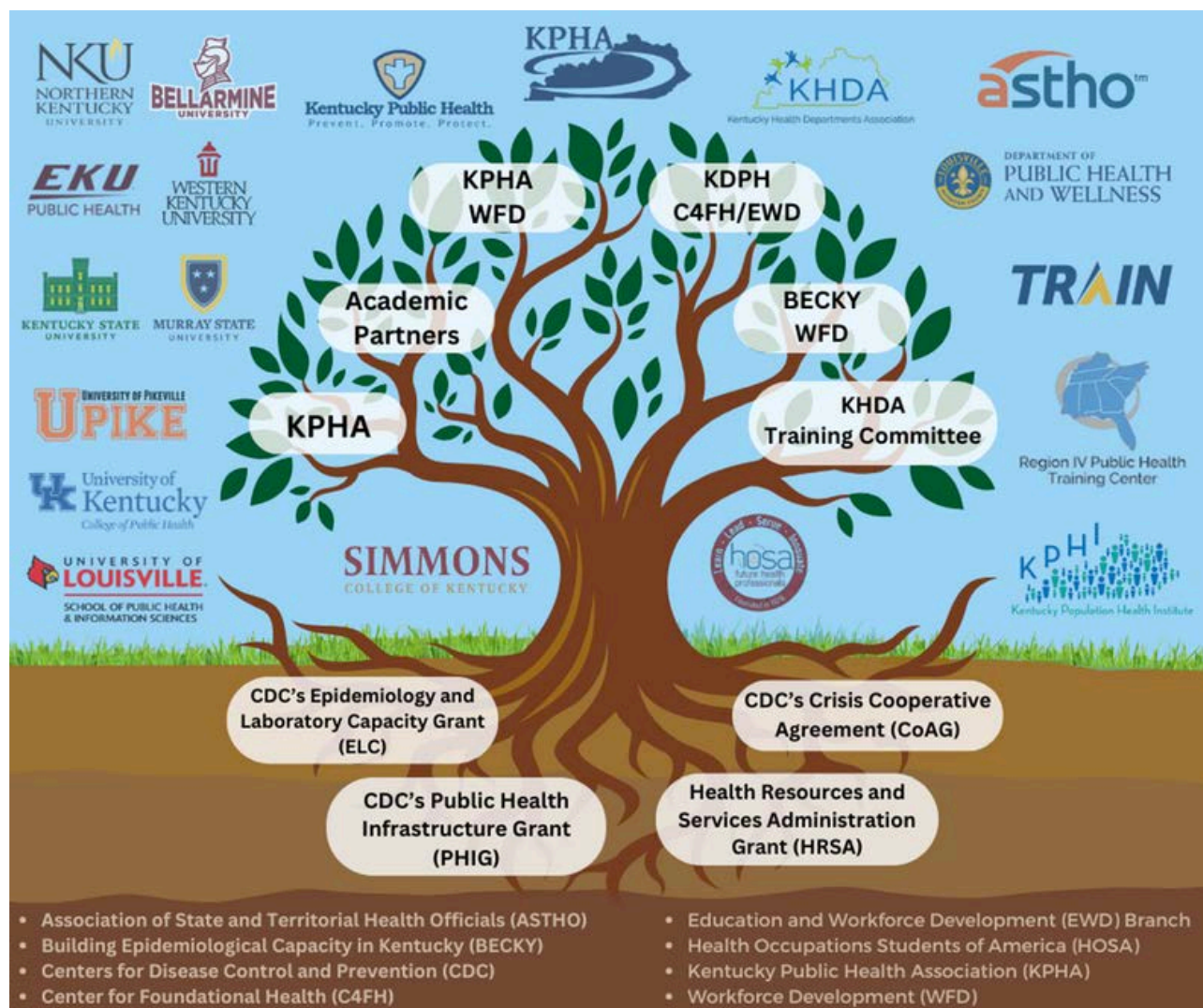


Pictured from Left to Right: Janie Cambron, Jim House, Tom Kollmer, Jon Vorbeck, Billy Pitts and Deena Bell

WORKFORCE DEVELOPMENT

Janie Cambron, Director of Land Grant Management at the University of Kentucky's College of Public Health, and Principal Investigator for the HRSA Public Health Scholarship Program (PHSP), provided highlights from the HRSA PHSP, a collaborative effort by the University of Kentucky, EKU, and University of Louisville, that supports scholarships for the future and current public health workforce.

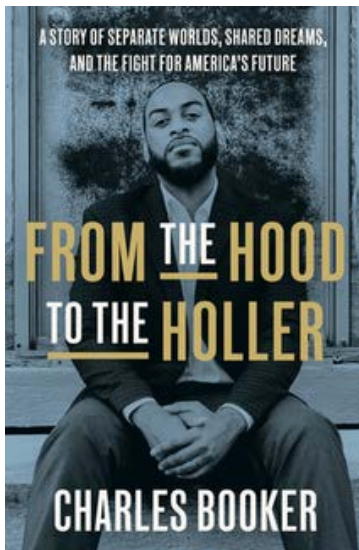
After the presentations, the facilitators led a structured Q&A session, addressing five key questions before inviting audience participation. The discussion concluded with closing remarks from Vorbeck and House, who summarized the major themes and expressed gratitude to attendees and speakers. The strong turnout and engagement showcased a shared commitment across the Commonwealth of Kentucky to cultivating a competent and response-ready public health workforce.



This tree illustrates the growing network of partnerships and funding sources that support Kentucky's public health workforce development initiatives. The roots represent foundational grants and federal support, while the branches highlight collaborative entities, including academic institutions, state agencies, and professional organizations, that are advancing training, capacity-building, and workforce excellence across the Commonwealth of Kentucky.

KPHA ANNUAL CONFERENCE KEYNOTE SPEAKER HIGHLIGHT

Charles Booker *Founder of "Hood to the Holler"*



Charles is a lifelong Kentuckian, born and raised in the West End of Louisville where he and his wife Tanesha have raised their 3 daughters. After earning his B.S. and JD from the University of Louisville, Charles went on to dedicate his life to public service. He has fought for equity and justice in every level of government, including being elected to the Kentucky House of Representatives in 2018 as the youngest Black Kentucky state legislator in nearly 90 years.

As a legislator, Charles fought for issues such as commonsense gun safety, lower prescription drug prices, voting rights, racial equity, criminal justice reform, environmental justice, workers' rights, fairness and human rights for all. Charles rose to national prominence in 2020, following an improbable, people-powered run in the Kentucky U.S. Senate Democratic Primary. In 2022, Charles led his historic grassroots movement in another run for the U.S. Senate, becoming the first Black Kentuckian to receive a major party nomination for the office.

Charles is the author of the memoir *From the Hood to the Holler* and is featured in the award-winning documentary also entitled *From the Hood to the Holler*. Building on his vision of empowering voices in all communities, Charles founded Hood to the Holler, a people-centered organization focused on building coalitions across urban and rural divides to strengthen democracy and end generational poverty. Charles continues his service by leading organizing and coalition efforts as Kentucky State Director of Faith Based & Community Initiatives in the office of the Governor.



KPHA ANNUAL CONFERENCE KEYNOTE SPEAKER HIGHLIGHT

Jess Pettitt, MEd, MBA, CSP

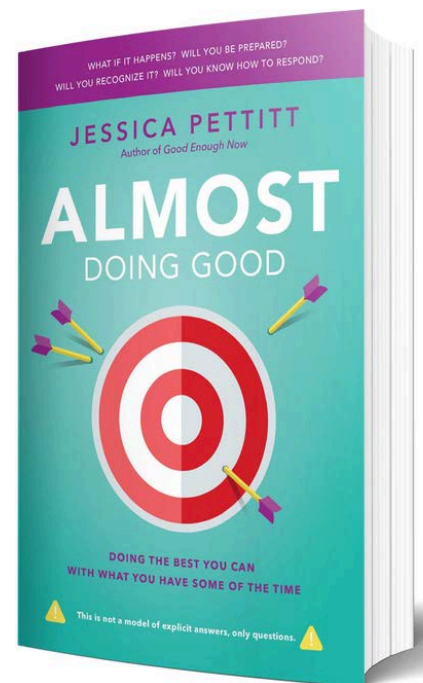


For nearly 20 years, Jess has educated, supported, and challenged diverse audiences to guide them to success. As a professional speaker, Jess's expertise earned her the Certified Speaking Professional (CSP) designation from the National Speakers Association, a designation held by fewer than 800 people worldwide. As a facilitator, she provides the frameworks for open, welcoming, and productive conversations.

Jess offers motivational keynotes, in-depth workshops, or deeper-dive group interactions. She can also frame an entire conference as emcee, working closely with your meeting professional. Cussing filters are optional, but today's current events and hot topics are not! Combining humor with adult learning with highly engaging content, participants walk away focused and confident in their role to make change now.

Her social justice and diversity curricula, as well as her publications, books, and resources, are used nationwide by organizations like the Department of National Intelligence, PayPal, American Counseling Association, Southwest Airlines, PowerTools for NonProfits, Saber Healthcare Group, and many more.

Jess's background uniquely qualifies her to educate employers on how to build welcoming, productive, and innovative teams. The ability to communicate, listen, learn, take responsibility, and acquire and retain talent and resources will lead to (and maintain) a more inclusive—and dare we say fun!—workplace environment. This has a direct impact on your bottom line now.



BOOK SIGNING

Keynote speakers for this year's Annual Conference are also known for their published works. Charles Booker's "From the Hood to the Holler" and Jess Pettitt's "Almost Doing Good" were offered to conference attendees following both sessions. Speakers also hosted book signings and took pictures with attendees, making this conference one of our most memorable yet!



KPHA would like to give a special thanks to Carmichael's Bookstore for making this opportunity possible.



Carmichael's has been in business in Louisville for 45 years. It was started in spring of 1978 by Carol Besse and Michael Boggs (the store name is a combination of their first names), and in 2019 was taken over by their daughter, Miranda, and niece, Kelly. It is a family business in the best tradition. As the business grew, so did the number of family members involved. The staff now includes more than 30 staff members, including 4 family members.

As a founding member of the Louisville Independent Business Alliance, Carmichael's is actively committed to Keeping Louisville Weird and spreading the word about the importance of buying from locally-owned businesses.

2025 SCHOLARSHIPS AND AWARDS

Scholarships

Ellen M. Buchart Scholarship: Chris Smith, RN, BSN

The Ellen M. Buchart Scholarship was named in memory and honor of Ellen Buchart who served Kentucky Public Health Association (KPHA) in many capacities, including as a past President.

Public Health Workforce Development Scholarship: Alex Halsey

The Public Health Workforce Development Scholarship requires an awardee to be employed by a local health department, public health organization, or health related agency. Preference will be given to students looking to enhance their education in the public health field in which they serve.

Theodore Hanekamp Scholarship: Anna Gummere

The Theodore "Ted" Hanekamp Scholarship was named in memory of and honor of Theodore "Ted" Hanekamp who devoted his entire career to public health. In 2006, Ted was inducted into the University of Kentucky College Public Health Hall of Fame (UKCPH). Ted was also very active in the Kentucky Public Health Association (KPHA).

Awards

Administrative Support Staff Award: Lisa Cornett Pollock

To honor someone who has made outstanding contributions in the field of administrative support for public health.

Elbert "Al" Austin, Jr. Career Achievement Award: Dr. Steven Browning, MSPH, PhD

This accolade is dedicated to someone who, despite their humility among peers, has achieved significant milestones in their career. Al Austin, who notably served as the health cabinet secretary in the 1980s, is the inspiration for this award

Helen B. Fraser Maternal and Child Health Award: Shannan Rome

To honor an individual who has made an exceptional contribution to the health and well-being of mothers and children in Kentucky. Dr. Fraser was state MCH director from 1956 until her death in 1965.

KPHA Group Award: Louisville Quick Response Team

To honor a designated group or organization that has collectively contributed to public health program development, toward enhancement of public health in the Commonwealth.

Outstanding Epidemiologist of the Year: Dr. Haritha Pallam, PhD., MS., MPH

To honor someone who is considered to have ongoing excellence in epidemiologic practice demonstrated by consensus of peers, leadership, or other colleagues AND either or both of the following impacts:

1. Significant impact in an area of expertise or on epidemiology practice across the state (improvement to epi practices in Kentucky, increasing the epi capacity to respond to public health issues, events or crisis, coordination of a significant or large-scale epi response, contributions to overall epi operations or processes in KY)
2. Significant impact on the health of the population of Kentucky (imputed or quantifiable reductions in morbidity or mortality for a particular outcome based epi practice, imputed or quantifiable improvements in health or health practices due to epi practices, significant epi contributions to apply practices that will have a long-term impact on the health of Kentuckians).

Outstanding Public Health Nurse Award: Carolyn Swisshelm, RN

To honor an outstanding nurse in our Commonwealth.

Russell E. Teague Meritorious Award: Lindsey Brewer

To honor and recognize exceptional and meritorious achievement in the field of public health. Dr. Teague was Kentucky Health Commissioner from 1956-1970.

2025 Scholarships and Awards

Sara C. Stice Health Education Award: Debbie Bell, RD, LD, CDCES, MLDE

To honor an individual who has made an outstanding contribution in the field of health education in Kentucky. Sara C. Stice was state Director of Health Education from 1950 until her retirement in 1973.

Virginia Dodd Rice Home Care Award: Debbie Chappell, RN

This award recognizes an individual who has delivered outstanding Home Health services in Kentucky, particularly in public health environments

Vivian A. Lasley-Bibbs “Changemaker” Award: Angela J. Graham, MPH, CPH

This award is to honor the legacy of Vivian A. Lasley-Bibbs and her dedication to building a more equitable Commonwealth. The impact of her work will be felt for decades to come and we are better because of her efforts. Not only has she left an indelible mark on many of our hearts and minds, but she is the legacy of health equity in public health in the Commonwealth. This year, KPHA is honored to award the Vivian A. Lasley-Bibbs Changemaker Award in her memory.

William “Bill” Patton Environmental Service Award: Emily Covey, RS

To honor a person who has demonstrated exceptional performance, outstanding achievements, and meritorious service in Environmental Services. Bill Patton worked tirelessly as an environmentalist in southeastern Kentucky from the early 1980's until his death in 2001. Bill truly believed that he could improve the environmental health of all Kentuckians.

Awards Selected by the KPHA Board of Directors

Industry Award: Kentucky Emergency Management

To honor and recognize an exceptional and meritorious achievement in Kentucky's public health by a business or organization.

President's Award: Dr. Deneice Bell, Ed.D., M.S.

Honors a person who has demonstrated exemplary leadership, support, and dedication to KPHA

Student Engagement Award for Excellence: University of Kentucky Student Public Health Association

The Public Health Workforce Development Scholarship will be administered by KPHA in the amount of \$2,000 and is payable at the rate of \$1,000 per semester paid directly to the student's school to provide general academic assistance for one year.

We encourage you to nominate your peers for one of our awards in 2026.

To learn more about the scholarship and awards criteria, please visit www.kpha-ky.org



Seeds of Change

CULTIVATING HEALTH & HAPPINESS IN OUR COMMUNITIES

March 26–28, 2025
Louisville, KY



Mark Your Calendar!

**78TH ANNUAL CONFERENCE:
MARCH 17-19, 2026
NORTHERN KENTUCKY CONVENTION CENTER**



Kentucky Public Health Association is an affiliated association of the American Public Health Association (APHA). We have collaborated with APHA to grow stronger as organizations, to share expertise, influence, and resources, and to advocate for common priorities at the local, state and federal levels.

APHA is the national voice of public health and champions the health of all people and all communities. It is the only organization that combines a nearly 150-year perspective, a broad-based member community and the ability to influence federal policy to improve the public's health. Learn more at www.apha.org

*Connect with
KPHA!*

Website



www.kpha-ky.org

Email



info@kpha-ky.org

Follow Us for More KPHA News and Updates!



[@KYPublicHealthAssociation](https://www.facebook.com/KYPublicHealthAssociation)



[@KYPublicHealth](https://twitter.com/KYPublicHealth)